

# CLONE LIGHT

## STANDARD



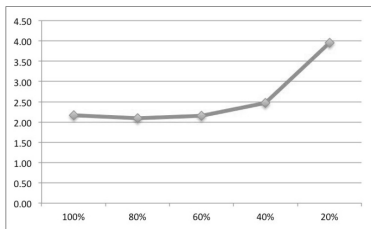
## FEATURES

- Industry Leading Performance
- Standard 2x4 Foot Print
- Power Pass Through Optional
- Natural White Light
- Patented 40-57 or 30-50 Spectrum
- Dimmable from 5%~100%
- UL1598D Horticultural Approval
- Architectural White Powder Coated Housing
- Made in the USA Patent #9820447

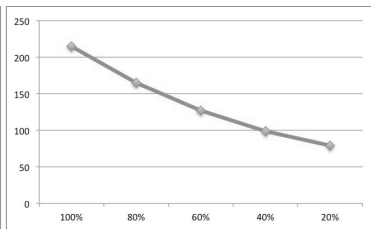
## WARRANTY & LISTINGS

- 5-year standard warranty

## PPF / J - DIMMING



## PPF - DIMMING



## SPECIFICATIONS

**Light Source**  
LED

**Spectra**  
Multi-White Daylight Analog  
**Spectra Efficacy (100W)**

2.43  $\mu\text{mol}/\text{J}$   
**PPF (100W)**  
250  $\mu\text{mol}/\text{sec}$

**Input Power**  
80W-100W MAX

**Input Voltage / Current (660W)**  
120 @ .85A | 240 @ .43A | 277 @ .40A

**L/H/W | Weight**  
36" / 2.5" / 10" | 8lbs

**Mounting Height**  
12 Inches Above Canopy

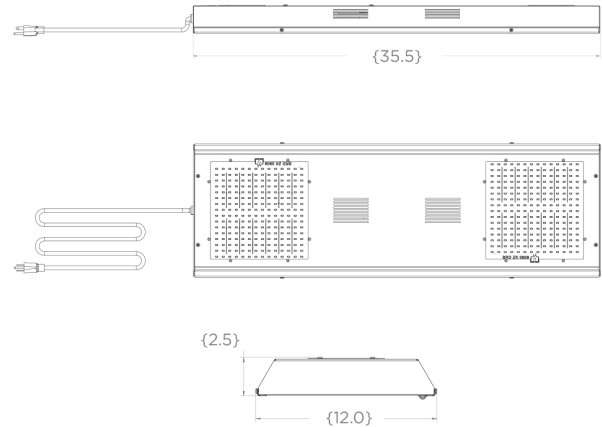
**Operating Temperature**  
OF - 90°F

**Thermal Management**  
Passive Convection

**Dimming**  
0-10V / PWM / Manual Preset

**Lifetime per TM21 L70 / L90**  
80K hrs / 35K hrs

## DIMENSIONS

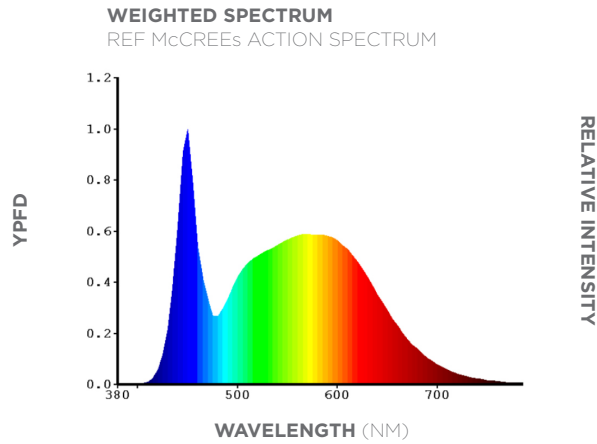
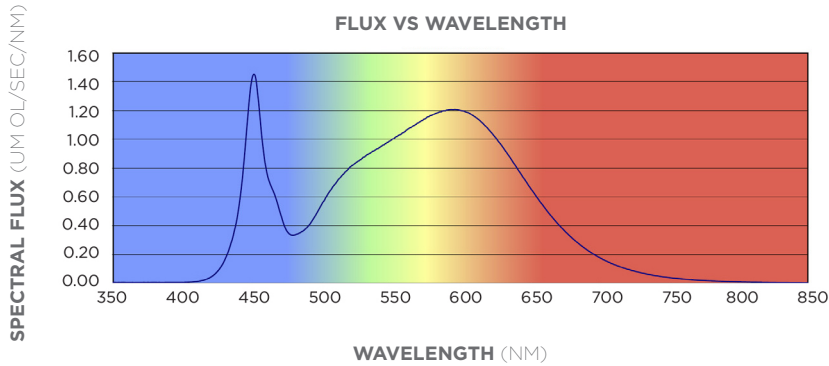


## ORDERING INFORMATION

Family	Power	Spectrum	Input Voltage	Cord
VZC	100= 100W (standard)  80=80W	V= 40/57 (standard) U= 30/50	ST= 90-305V (standard) HV= 180-528V	#= Length (10' standard, 15' option) #W= Whip (no plug) #N5= 5-15P (standard) #N6= 6-15P (standard) #L7= L7-15P

# CLONE LIGHT

## ELECTRICAL DATA



WAVELENGTH RANGE (NM)	PHOTON FLUX (UMOL/SEC)	WAVELENGTH RANGE (NM)	PHOTON FLUX (UMOL/SEC)
UVA	350 - 360	590 - 600	22.836832
	360 - 370	600 - 610	22.394389
	370 - 380	610 - 620	21.129417
	380 - 390	620 - 630	19.124796
	390 - 400	630 - 640	16.653395
VIOLET	400 - 410	640 - 650	13.941318
	410 - 420	650 - 660	11.315900
	420 - 430	660 - 670	8.934050
	430 - 440	670 - 680	6.909515
	440 - 450	680 - 690	5.263733
BLUE	450 - 460	690 - 700	3.959170
	460 - 470	700 - 710	2.955288
	470 - 480	710 - 720	2.198651
	480 - 490	720 - 730	1.634687
	490 - 500	730 - 740	1.208980
CYAN	500 - 510	740 - 750	0.894305
	510 - 520	750 - 760	0.666947
	520 - 530	760 - 770	0.501310
	530 - 540	770 - 780	0.378130
	540 - 550	780 - 790	0.289253
GREEN	550 - 560	790 - 800	0.222187
	560 - 570		
	570 - 580		
	580 - 590		
	590 - 600		
YELLOW			