

LED Recessed Soffit Light

VRSS SERIES



FEATURES & SPECIFICATIONS

APPLICATION — The high performance luminaire is designed for recessed applications where long life, low maintenance, and consistent color rendering is required. Areas with limited accessibility due to fixture location or where heavy pedestrian traffic makes maintenance difficult are ideal applications such as retail canopies.

CONSTRUCTION — The heavy duty housing is constructed of extruded aluminum. The optical assemblies are sealed in place using a silicone gasket for weather tight protection and prevent dust, debris or insects from infiltrating the LED module. Spring locks securely hold the LED brick in place. ETL listed for damp locations. LED Module IP65 rated.

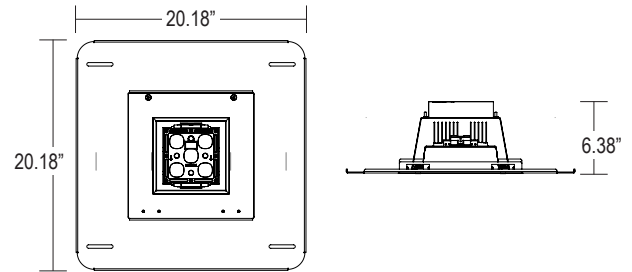
FINISH — A Super Durable Polyester powder coat finish is electrostatically applied in our state of the art paint facility. Standard colors available: White. Custom colors available upon request.

OPTICAL SYSTEM — Made with a state of the art UV stabilized acrylic high performance refractive optical assemblies that use high transmissivity materials to achieve precise photometric distributions. Available in Type V Medium beam configuration. The recessed optics eliminate glare.

ELECTRICAL SYSTEM — Available in 5000K-70 CRI Cool White (+/- 500K) or 4100K-70 CRI Neutral White color temperatures propagated with Philips Lumileds Luxeon MX LED's. Consult factory for high CRI (90+) model availability. Available with 100-300V 50/60 Hz 90°C rated power supply. LED's rated for over 50,000 hours at 25°C ambient temperature. 347V~480V input option available. 0-10V dimming. 10 kV surge protection provided. Built-in Active PFC Function >95%/Full load. LED Power Supply conforms to UL8750 standards and is IP67 rated for wet locations.

MOUNTING — The fixture is recess mounted using the fascia plate provided for rough-in. Door/LED assembly utilizes quick release hinges to allow the fascia plate to be mounted first. Door/LED assembly may then be attached to the fascia plate and wiring connections made. Two (2) quarter-turn latches holds the assembly firmly in place. Available for New Construction or Retrofit applications.

LISTINGS — ETL listed for damp locations. Meets US and Canadian safety standards. -40°C to 40°C ambient operation. RoHS Compliant.



Series	Housing Height	Length & Width
LRSS	6.38"	20.18" x 20.18"

ORDERING INFORMATION

Choose the bold face options for the appropriate luminaire configuration for your application and enter on the line above each fixture attribute. Accessories may be factory installed, depending on the particular accessory chosen, but still be ordered as a separate line item.

Example: **VRSS 1 C M T5M D 1 NC**

VRSS

Series	# Of Bricks	Color Temp	LED Type	Optics	Drive Current	Voltage	Mounting	Installation
VRSS	1 1 Brick	C Cool White (5000K) N Neutral White (4100K)	M 5 Luxeon MX LEDs	T5M Type V Medium	D 900 mA	1 Multi-Volt! 2 347~480V	RSM Recessed Soffit Mount	NC New Construction RETRO³ Retrofit

NOTES

- 1 Multi-Volt is an auto ranging power supply from 90V to 300V input.
- 2 Custom RAL color matching is available. Contact your Techlight sale representative for additional information.
- 3 Existing enclosure must be a minimum of 10" x 10" with a minimum height of 7".

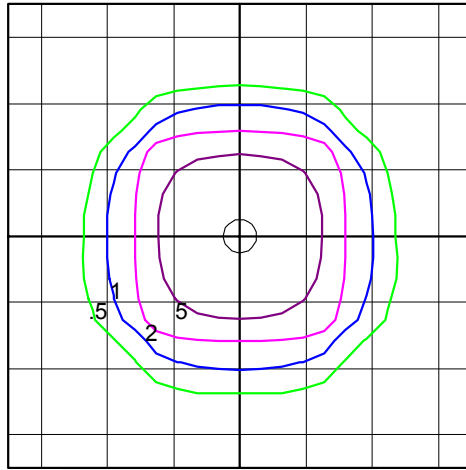
VRSS LED Recessed Soffit Light

PHOTOMETRICS

**IES INDOOR REPORT
PHOTOMETRIC
FILE NAME:
LRSS1CMT5MD1RSM**

**900mA, Cool White,
T5M Lens**

59W LRSS Soffit
Color Temperature: 5,000 K



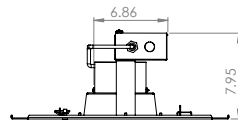
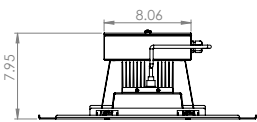
Horizontal Footcandles
Scale: 1 Inch = 10 Ft.
Light Loss Factor = 1.00
Lumens Per Lamp = N.A. (absolute photometry)
Luminaire Lumens = 6992
Mounting Height = 15.00 Ft.
Maximum Calculated Value = 9.25 Fc
Arrangement: Single

LED CHARACTERISTICS

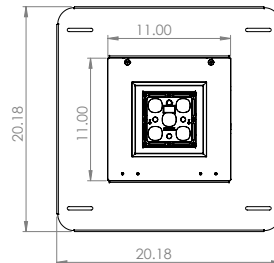
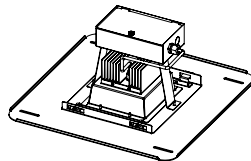
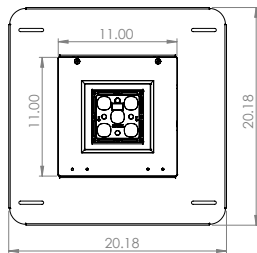
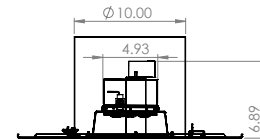
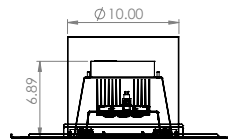
Drive Current	Color Temp	Delivered Lumens TYPE 5M	System Wattage	L70 @ 25°C	Amperage Draw					
					120V	208V	240V	277V	347V	480V
900 mA	CW	6992	59W	> 50K	0.50 A	0.29 A	0.25 A	0.22 A	0.18 A	0.13 A
900 mA	NW	6724	59W	> 50K	0.50 A	0.29 A	0.25 A	0.22 A	0.18 A	0.13 A

DIMENSIONS

New Construction Model (NC)



Retrofit Model (RETRO)



WARNING: Maintenance performed including the replacement of LED components while power is still supplied to the luminaire may result in system failures and will void the warranty.