



Series VOSL



Outdoor Sign Lighter 3/4" Hub (Wet Location for Downlight Only)

This Series VOSL Outdoor Sign Lighter specification-grade fixture rotates up to 90°. This durable fixture is ideal for applications that include parking and commercial / retail outdoor areas for sign and walkway lighting, specifically for mounting in a downward orientation for downlighting purposes. 3/4" hub.

CONSTRUCTION

Powder-coated white aluminum extrusion with white interior and cast-aluminum end plates. The diffuser/lens is a smooth clear acrylic. Available in 4 and 8 foot nominal lengths.

MOUNTING

Fixtures are typically mounted on conduit. Downlight only.

DIMENSIONS

4 ft. - 52.81"L x 5.25"W x 3.06"H
8 ft. - 100.94"L x 5.25"W x 3.06"H

FEATURES & BENEFITS

- Optionally configurable in continuous runs without additional accessories
- Up to 90 degree rotation, for downlighting purposes only
- Outdoor rated for wet locations
- Multiple Kelvin temperatures (3000K, 3500K, 4000K, 5000K); consult factory for RGBW option
- Multiple lumen packages/ wattages available through use of programmable drivers
- CRI >80 standard, 90 optional
- L70: >50,000 Hours
- Dimming: 0-10V 120-277V standard, 120V ELV/TRIAC optional
- Power factor >0.90
- 5 year warranty



Series VOSL

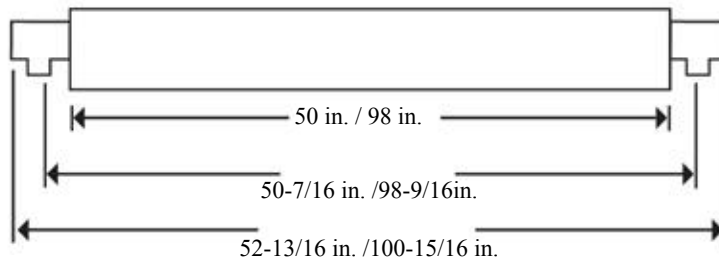
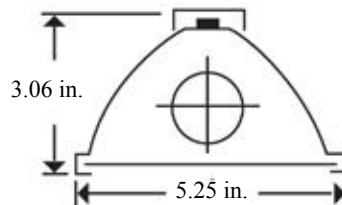
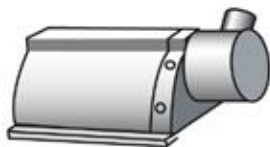
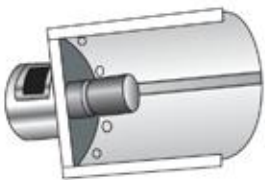
Outdoor Sign Lighter 3/4" Hub
(Wet Location)

ORDER INFORMATION

Factory at your fingertips. Fill in the blanks to create your part number or create a custom configuration.

SERIES	SIZE	WATTAGE* & LUMENS*		DRIVER		COLOR/CRI**	
VOSL Outdoor Sign Lighter 3/4" Hub	48L 48"	S48W5900L	48 Watts 5900 Lumens	DMV	0-10V Dimming	30K	3000K 80 CRI
		S57W6500L	57 Watts 6500 Lumens	G120	ELV/TRIAC Dimming at 120V only	35K	3500K 80 CRI
	96L 96"	S96W11800L	96 Watts 11800 Lumens	D1MV	0-10V Dimming (dim to 1%)	40K	4000K 80 CRI
		S114W13000L	114 Watts 13000 Lumens			50K	5000K 80 CRI
						930K	3000K 90 CRI
						935K	3500K 90 CRI
			940K	4000K 90 CRI			
			950K	5000K 90 CRI			

DRAWINGS & IMAGES



Note:
 *Programmable LED drivers allow custom configured wattages and corresponding lumens.
 ** Consult factory for 5000K 90CRI availability.
 We reserve the right to change design, materials, LEDs and finish in any way that will not alter installed appearance or reduce function and performance.

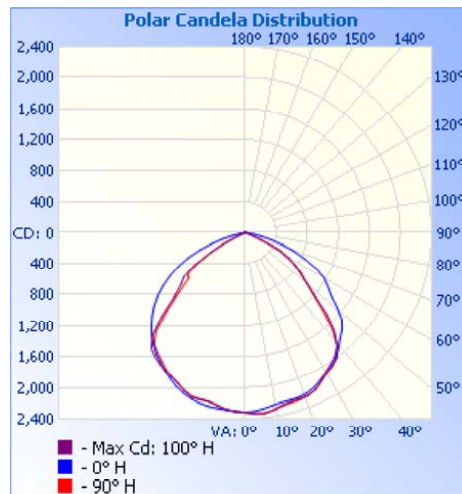
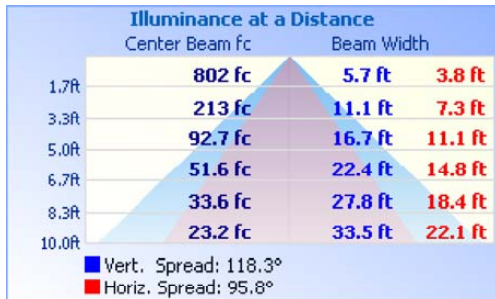
Series VOSL

Outdoor Sign Lighter 3/4" Hub

(Wet Location)

PHOTOMETRICS

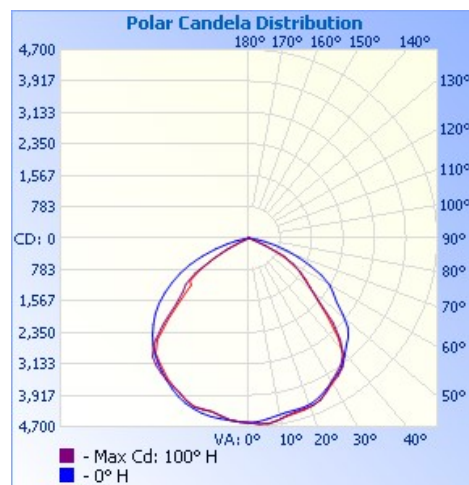
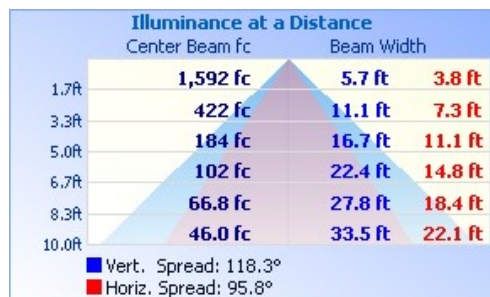
48 " - OSL48LS48W5900LDMV40K



Zonal Lumen Summary

Zone	Lumens	% Luminaire
0-30	1,840.8	31%
0-40	3,066.9	51.6%
0-60	5,276.4	88.8%
60-90	665.9	11.2%
70-100	133.4	2.2%
90-1200.1		0%
0-90	5,942.3	100%
90-1800.1		0%
0-180	5,942.4	100%

96 " - OSL96LS96W11800LDMV40K



Zonal Lumen Summary

Zone	Lumens	% Luminaire
0-30	3,655.3	31%
0-40	6,090.0	51.6%
0-60	10,477.5	88.8%
60-90	1,322.3	11.2%
70-100	264.8	2.2%
90-120	0.2	0%
0-90	11,799.8	100%
90-180	0.2	0%
0-180	11,800.0	100%