

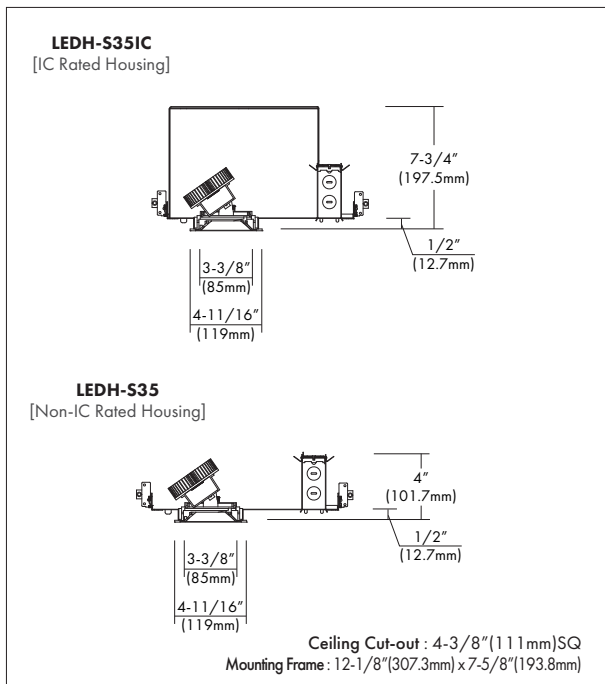


VLEDH-S35, LEDH-S35IC

3.5" Square IC and Non-IC Architectural LED Series Downlight



Test Specification				
[LEDH-S35IC-xx UZTD		QT-322-xx-830M-WHWH]		
LED Quantity	1 EA (COB)			
Input Voltage	120V or 277V			
Wattage (+/-5%)	10W	14W	23W	30W
Nominal Lumens	1,000	1,400	2,300	3,000
Delivered Lumen (+/-5%)	850	1,070	1,600	2,630
Efficacy (LPW) (+/-5%)	85	76.4	69.6	87.7
Luminaire Beam	36°	36°	42°	48°
CCT (Color +/-5%)	2700K, 3000K, 3500K, 4000K			
CRI (Typical)	80, 90			
Dimming	0~10V, ELV & TRIAC Optional Lutron Drivers			
LED Module	5 yr or 50K hr			
Environment	Damp Location & *optional Wet Location			



Design Features

- Light-weight aluminum housing, adjusts for ceilings up to 1-1/4" thick.
- Driver is remotely installed onto the J-box to isolate it from the LED module.
- Dimming capability is standard with most 0~10V, ELV & TRIAC dimmers.
- Optional Lutron Hi-lume A-Series LED drivers and EcoSystem 5-Series LED drivers are available. Lutron drivers provide flicker-free, smooth, continuous dimming down to 1% for Hi-lume and 5% for EcoSystem. (Contact factory for dimming system requirements)
- Hanger bars and multi-channel brackets are pre-installed.
- Multiple reflector distribution patterns available: pinhole trim with Narrow Spot (NS), Narrow beam (N), Medium beam (M), and Wide beam (W).
- Precision diecast aluminum trim frame painted and available with Trim or Trimless design with Drywall Mud Frame kit.
- Cold forged aluminum heat sink is painted for efficient heat dissipation.
- The LEDH-S35IC luminaire is listed as Type IC and is suitable for direct contact with insulation.
- Certified to IESNA LM-79: Electrical and Photometric Testing for Solid State Lighting. LED chip set is LM80 compliant.
- cETLus Listed.

Trims :

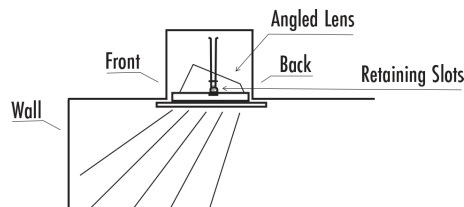


QT-329
- Haze Clear Reflector

QT-338
- Haze Clear Lens
Wall Wash Reflector

QT-322
- Haze Clear Reflector with
Regressed Frosted Lens

QT-335
- Shower Flat Frost Lens



VLEDH-S35, LEDH-S35IC

3.5" Square IC and Non-IC Architectural LED Series Downlight

Ordering Information

Housing

IC Housing:
VLEDHEDH-S35IC

Non-IC Housing:
LEDH-S35

-Watts

-10 = 10W
-14 = 14W
-23 = 23W
-30 = 30W

Driver*

ZTD = 0-10, ELV & Triac dimmable
(Dimming range varies 1-10%)
L1D = Lutron Hi-lume 1% dimming
L5D = Lutron EcoSystem 5% dimming
LTE = Lutron Hi-lume 1% 2-Wire dimming

*Option: Emergency (Non-IC only)

-EM = Emergency Battery Backup

Voltage*

*IC Only
U = 120-277V

*Non-IC Only
1 = 120V
2 = 277V

Trim/LED Kit*

QT-329
QT-338
QT-322
QT-335

*-Option: Sealed Lens

WRL = Wet Location

-Wattage

-10 = 10W
-14 = 14W
-23 = 23W
-30 = 30W

-CRI

-8 = 80
-9 = 90

Color Temp.**

27 = 2700K
30 = 3000K
35 = 3500K
40 = 4000K

Beam Angle

Upper Reflector:
NS = Narrow Spot 15°
N = Narrow 24°
M = Medium 38°
W = Wide 60°

-Finishes**

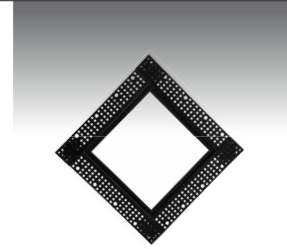
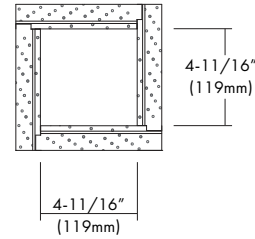
-WH = White
-BK = Black

** Consult factory for other Color Temperatures and Finishes

Option

TML-352-MUD

[3.5" Square Flangeless Mud Frame]

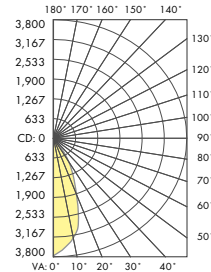


Trimless Ceiling Cut-out: 4-15/16" (125mm) SQ

PHOTOMETRIC REPORT*

* Contact Factory for IES File

Polar Candela Distribution



Illuminance at a Distance

	Center Beam FC	Beam Width
2.0ft	942.8 fc	1.8 ft
4.0ft	235.7 fc	3.6 ft
6.0ft	104.8 fc	5.3 ft
8.0ft	58.9 fc	7.1 ft
10.0ft	37.7 fc	8.9 ft
12.0ft	26.2 fc	10.7 ft

Beam Spread: 48°

[QT-322-30-830M]