



LED Gas Station Canopy Light For Recessed and Surface Mounting

Series VGS-01-G7



Better solutions for Led Gas Station Canopy Light

- IP65 water-proof
- AC100-277V 50/60Hz
- Easy Installation
- 140Lm/w
- Operating Temp.: -40°C~+50°C(C2)
-20°C~+50°C(C4)
- Storage Temp.: -40°C~+80°C



Options

Driver	Voltage	CCT
Sosen Driver	AC100-277V for C2	3000K
TUV,UL List Driver	AC120-277V for C4	4000K
		5000K
		5700K

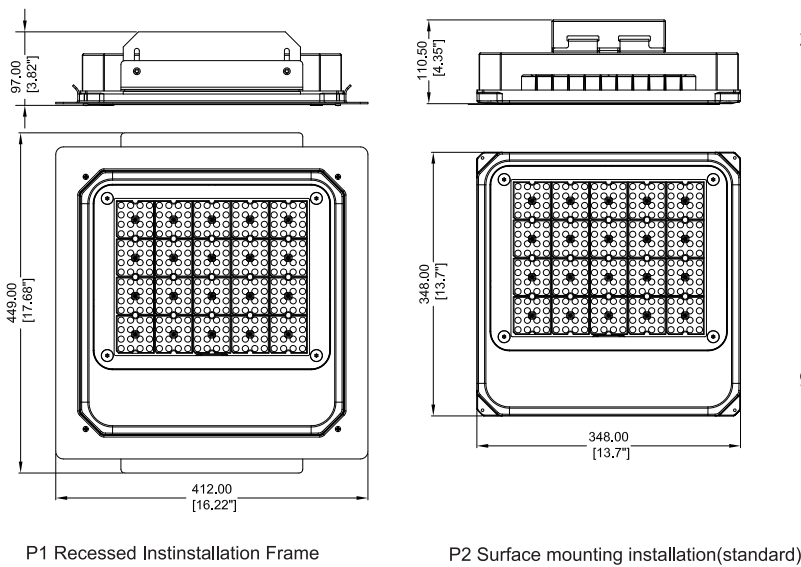
Application

The LED Gas Station Light provides a energy saving solution to a wide spectrum of applications including , but not limited to security lighting in schools,office, complexes , light commercial development , apartments , parking garages, entryways,and stairwells. It also can be used in workshop,warehouse,parking lot,toll gate , gas station , supermarket , exhibition hall , gym and other places.

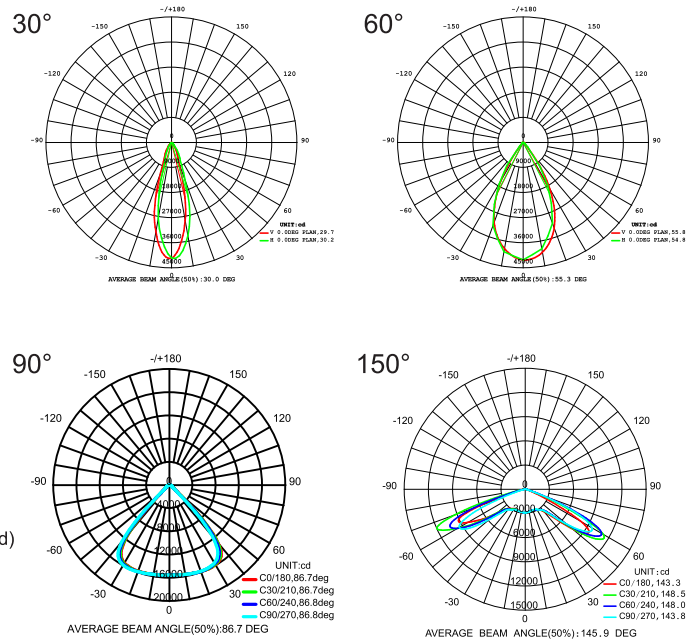
Specifications

Version	Item	Power	Luminous Efficacy	Leds	CRI	Weight	Beam Angle
C2/C4	GS80W-01-G7	80W	140lm/W	Lumileds 2835	> 80	7.80kg(17.2lbs)	30°/60°/90°/150°
	GS100W-01-G7	100W	140lm/W	Lumileds 2835	> 80	7.80kg(17.2lbs)	30°/60°/90°/150°
	GS120W-01-G7	120W	140lm/W	Lumileds 2835	> 80	7.80kg(17.2lbs)	30°/60°/90°/150°
	GS150W-01-G7	150W	140lm/W	Lumileds 2835	> 80	7.80kg(17.2lbs)	30°/60°/90°/150°
	GS200W-01-G7	200W	140lm/W	Lumileds 2835	> 80	7.80kg(17.2lbs)	30°/60°/90°/150°

Dimensions(mm)

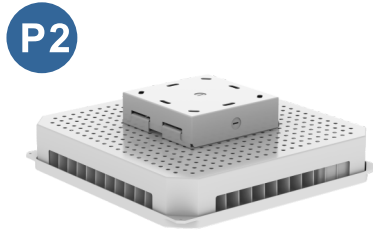


Photometry



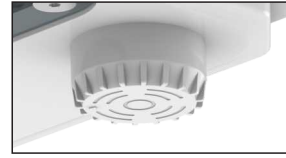
LED Gas Station Canopy Light

Model Options



Microwave Motion Sensor Options

(Extra Remote Control Options)
Only for TUV,UL List Driver



Default Setting:
Detection area:100%,
Hold time:5 seconds,
Daylight threshold:50lx,
Stand-by dimming level:50%,
Stand-by period:10 seconds

Installation and use

P1 Recessed Installation Frame

<p>01</p> <p>Hole Diameter : Max 400x400mm Min 370x370mm</p>	<p>02</p>	<p>03</p>
<p>04</p> <p>Brown(Black) -- L Blue(White) -- N Green/Yellow -- GND</p>	<p>05</p>	<p>06</p>

P2 Surface mounting installation(standard)

<p>01</p> <table border="1"> <tr> <td>d1</td> <td>Ø6mm</td> </tr> <tr> <td>L2</td> <td>160mm</td> </tr> <tr> <td>L1</td> <td>120mm</td> </tr> </table>	d1	Ø6mm	L2	160mm	L1	120mm	<p>02</p>	<p>03</p>
d1	Ø6mm							
L2	160mm							
L1	120mm							
<p>04</p> <p>Brown(Black) -- L Blue(White) -- N Green/Yellow -- GND</p>	<p>05</p>	<p>06</p>						

Packing Spec

Item	Box			Carton		
	Measurement(mm)	Gross weight	Pcs/box	Measurement(mm)	Gross weight	Pcs/box
GS80W~200W-01-G7-P1	L480*W460*H165	9kg(19.8lbs)	1	/	/	/
GS80W~200W-01-G7-P2	L420*W420*H175	7.5kg(16.5lbs)	1	/	/	/