

# Linear LED Industrial Highbay Light



## LED High Bay

50-300W

### FEATURES

- Linear Design
- System Light Efficacy 105 LPW
- Easy Installation & Maintenance
- IP65
- Five Years Warranty
- ETL, cETL, DLC, CE, RoHS, CB, WEEE, SAA

### TYPICAL APPLICATIONS

- Warehouse/Manufacturing Facilities
- Convention Centers/Sporting Arenas
- Big-Box Retail Stores
- Cold Storage Facilities
- Gymnasiums

### SPECIFICATIONS

#### PERFORMANCE

LED Chip	Osram / Philips Lumileds
Color Temperature	4500~5500K (2500~5500K Optional)
CRI	≥70
Lumen Maintenance	L70>70,000 hours (Calculated Using TM-21 Calculator)
Input Voltage	100-277 VAC (347/480 VAC Optional) Dimming Optional
Power Factor	0.95 minimum
IP Rating	IP65

#### ENVIRONMENTAL

Operating Temperature	-30 to 45°C (-22 to 113°F)
Storing Temperature	-40 to 80°C (-40 to 167°F)
Humidity	15% to 95% RH

#### PHYSICAL

Fixture Material	Aluminum Alloy
------------------	----------------

**WARRANTY** 5 Years



## ■ Specifications

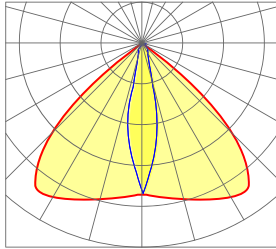
Part#	Power	Equivalent	Total Lumen	N.W	Product Dimensions
EO-LN-50	50W	150W HID	5250lm	2.4kg/5.4lbs	355×159×114mm 14.0×6.3×4.5in
EO-LN-100	100W	250W HID	10500lm	4.3kg/9.5lbs	650×159×114mm 25.6×6.3×4.5in
EO-LN-150	150W	400W HID	15750lm	5.6kg/12.3lbs	945×159×114mm 37.2×6.3×4.5in
EO-LN-200	200W	750W HID	21000lm	7.6kg/16.8lbs	1240×159×114mm 48.8×6.3×4.5in
EO-LN-300	300W	1000W HID	31500lm	11.4kg/25.3lbs	1830×159×114mm 72.0×6.3×4.5in

## ■ Typical Case Reference

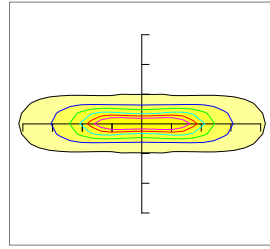


## ■ Photometrics

### 30x100 DEGREE

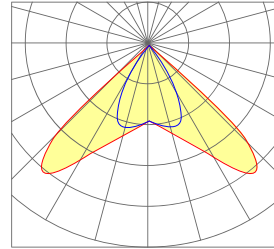


— 0.0~180.0  
— 90.0~270.0

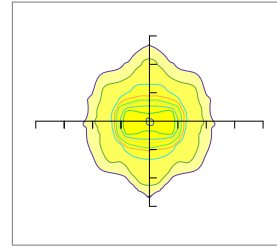


Mounting Height 10m, 0 Tilt,  
50LUX-5LUX

### 60 x 100 DEGREE

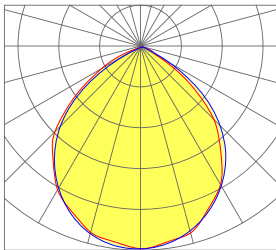


— 0.0~180.0  
— 90.0~270.0

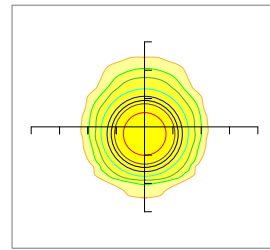


Mounting Height 10m, 0 Tilt,  
50LUX-5LUX

### 90 DEGREE

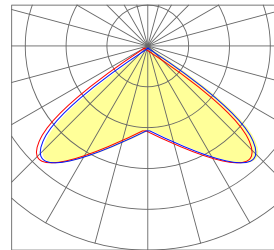


— 0.0~180.0  
— 90.0~270.0

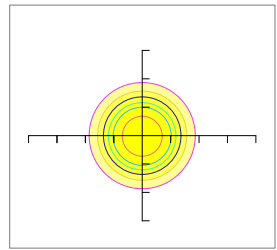


Mounting Height 10m, 0 Tilt,  
20LUX-0.2LUX

### 110 DEGREE

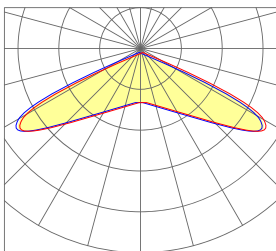


— 0.0~180.0  
— 90.0~270.0

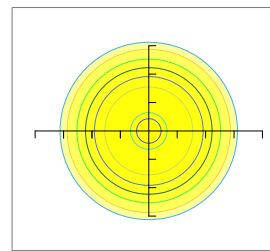


Mounting Height 10m, 0 Tilt,  
20LUX-0.2LUX

### 150 DEGREE

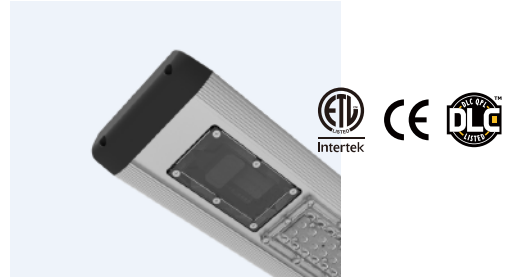


— 0.0~180.0  
— 90.0~270.0



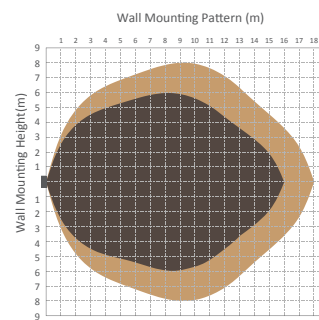
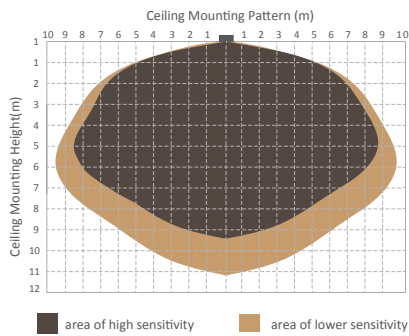
Mounting Height 10m, 0 Tilt,  
20LUX-0.2LUX

## ■ Microwave Sensor & Dimmer Option



Technical Data			
Operating voltage	120-277V	Standby power	approx. 0.5W
Switched power	Max.capacitive load: 800W @277V, 400W@120V	Heating time	20s
Detection area	10/50/75/100%, can be customized	Sensor principle	Microwave motion
Hold time	5S/30S/1min/5min/10min/20min/30min, can be customized	Microwave frequency	5.8GHz+/-75MHz
Standby period	0s/10s/1min/5min/10min/30min/1h/+∞can be customized	Microwave power	<0.2mw
Standby dimming level	10%/20%/30%/50% can be customized	Detection range	Max. (φxH):18m x 10m
Daylight threshold	2~50lux daylight/twilight/darkness, can be customized	Detection angle	30° ~ 150°
Operating temperature	-35°C ~ +70°C	Mounting height	Max.10m
IP rating	IP20, IP65(mounting in Hytronik special box)	Certificate	ETL, FCC

### Detection Pattern



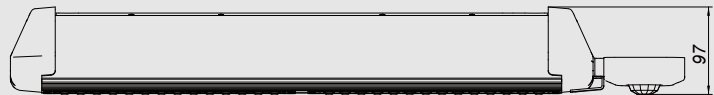
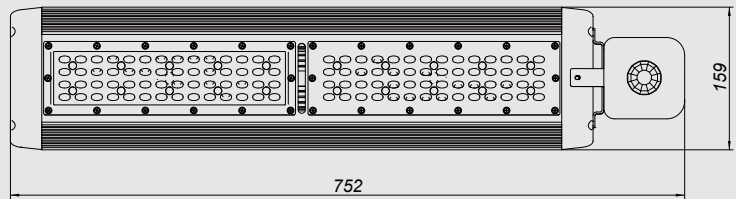
### Setting

	Detection Area			Hold-time			Daylight Sensor			Stand-by Period (Corridor function)			Stand-by Dimming Level				
	1	2		1	2	3	1	2		1	2	3	1	2			
I	●	●	100%	●	●	●	5s	●	●	Disable	●	●	●	0s	●	●	10%
II	●	○	75%	●	●	○	30s	●	○	50lux	●	●	○	10s	●	○	20%
III	○	●	50%	●	○	●	1min	○	●	10lux	●	○	●	1min	○	●	30%
IV	○	○	10%	●	○	○	5min	○	○	2lux	●	○	●	5min	○	○	50%
V				○	●	●	10min				○	●	●	10min			
VI				○	●	○	20min				○	●	○	30min			
VII				○	○	○	30min				○	○	●	1h			
VIII											○	○	○	+∞			

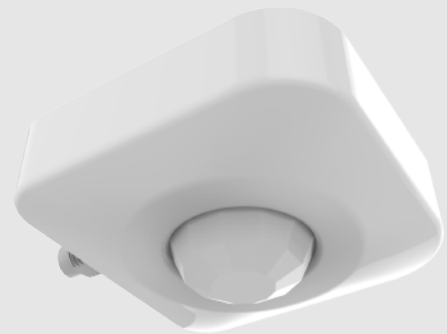
- Detection area can be reduced by selecting the combination on the DIP switches to fit precisely for each specific application.
- Hold-time means the time period you would like to keep the lamp on 100% after the person has left the detection area.
- The daylight threshold can be set on DIP switches, to fit for particular application.
- This is the time period you would like to keep at the low light output level before it is completely switched off in the long absence of people. Note: 0 means on/off control; +∞ means 2 steps of dimming control, fixture never switch off.
- This is the dimmed low light output level you would like to have after the hold-time in the absence of people.







## ■ PIR Sensor Option



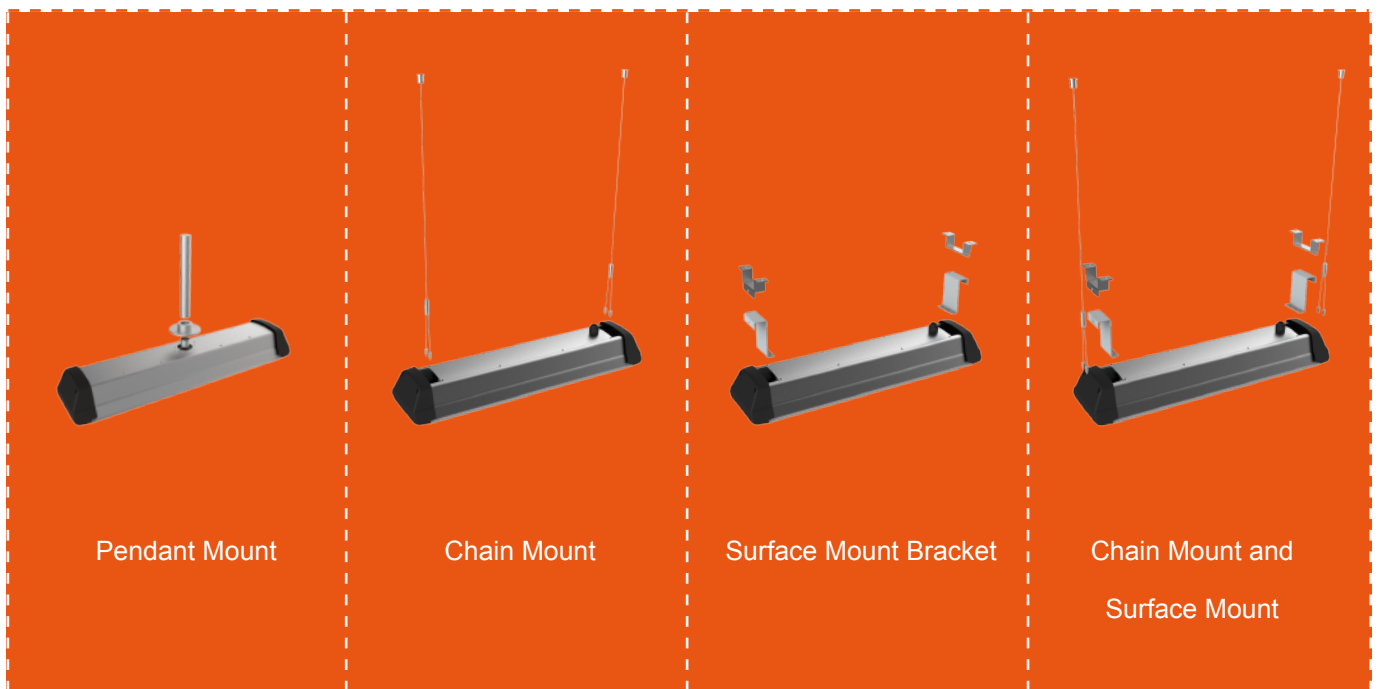
Input Voltage	AC 120-277 V, 60HZ
Load Requirement	800VA @ 120V AC Fluorescent Ballasts NO Min 1200VA @ 277V AC Fluorescent Ballasts NO Min
Load Horsepower	1/6HP
Time Delay Adjustment	Fixed 15 seconds to 30 minutes
Operating Temperature	32° to 131° F ( 0° to 55° C )
Humidity range	0%-90%RH, non-condensing
Coverage range	Up to 30 ft mounting / 360 Degrees
Terminal Line	Black-Hot, White-Neutral, Red-Load
Warranty	2 Years
IP Rating	IP 30
Sensor Type	IR Sensor



## ■ Mounting Options & Accessories

Image	Applicable Power	Product Code	Product Description
	50W~100W	SP-NPT	Pendant Mount
	50W~300W	SP-CH	Chain Mount
	50W~300W	SP-SM	Surface Mount Bracket
	50W~300W	SP-CH+SM	Chain Mount and Surface Mount

## ■ Bracket Assembly



## ■ Ordering Information

