



VE-VER50 SERIES

Recessed Aluminum Luminaire

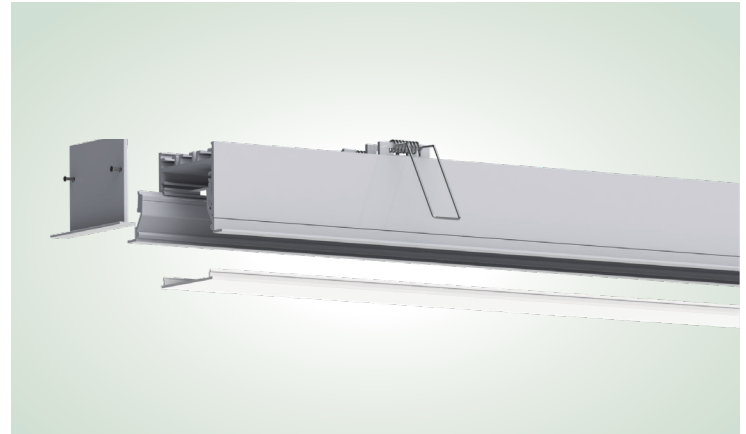
FEATURES & SPECIFICATIONS

APPLICATION — The VE-VER50 with its high efficiency and smooth appearing light source is ideal for both retrofit and new construction. The Embody is designed to fit into any standard drop ceiling that has no side obstructions prohibiting a clear view. With 50,000 hours of life at L70 standard and a 5 year limited warranty the fixture maintenance cost is reduced substantially over time. The Embody is excellent for schools, municipalities, convenient stores, institutions, and all commercial applications.

CONSTRUCTION — The Embody Housing is constructed of structurally embossed, 22 gauge cold rolled steel. Shallow, light housing for easy installation. Post painted body with smooth sides for safe handling. Extra reinforcement in the body to create additional rigidity. Superior mechanical and gasketed light seal to eliminate any light from escaping; therefore, utilizing all the recycled light available. Integral T-Bar clips to secure fixture to T-Bar system.

FINISH — Post painted housing and components with a Lighting White Polyester type paint which has a UV stabilizer included with a 93% reflectivity. Raw steel goes through our custom wash system with a mild solvent and pre-treatment "rust inhibitor" before passing through a preheat oven. After the paint is applied the fixture then passes through the cure oven for maximum adhesion. Each fixture is painted to a minimum of 2-3 mil thickness for extra durability.

OPTICAL SYSTEM — Techlight's state of the art Diffuser sets new benchmarks for performance in key metrics such as transmission efficiency for a given level of diffusion or hiding power, beating holographic, surface relief and bulk diffuser techniques. We enable high transmission and a pleasant uniform light at the Same time.



SERIES	LENGTH HEIGHT & WIDTH
VE-VER50	2.52" x 1.77"

ORDERING INFORMATION

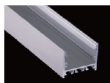
Choose the bold face options for the appropriate luminaire configuration for your application and enter on the line above each fixture attribute. Accessories may be factory installed, depending on the particular accessory chosen, but still be ordered as a separate line item.

EXAMPLE:

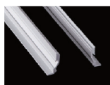
VE-VER50 E50 E50-AD J-90A

VE-VER50				
SERIES	PROFILE	DIFFUSER	JOINER	OPTIONAL DIFFUSER
	E50 = Aluminum Profile ER = Recessed wing	E50-AD = Aluminum diffuser SC-ER = Spring Clip	J-90A = Joiners 90°A J-90B = Joiners 90°B J-180A = Joiners 180° J-120 = Joiners 120°	ER50-O = Opal ER50-N = New Opal
	ER50-CAP = Aluminum Endcap (with/without hole) ER50-CAP-H = Aluminum Endcap (with/without hole)			

ACCESSORIES



Aluminum Profile
Code: **E50**



Recessed wing
Code: **ER**



Aluminum Endcap (with/without hole)
Code: **ER50-Cap**
Code: **ER50-Cap-H**



Aluminum diffuser
Code: **E50-AD**



Spring Clip
Code: **SC-ER**



Joiners 90°A
Code: **J-90A**



Joiners 90°B
Code: **J-90B**

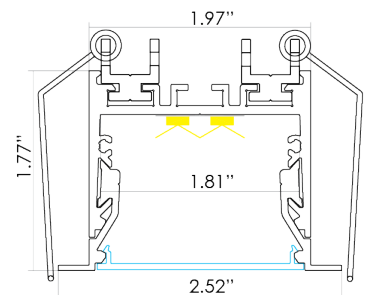


Joiners 180°A
Code: **J-180A**

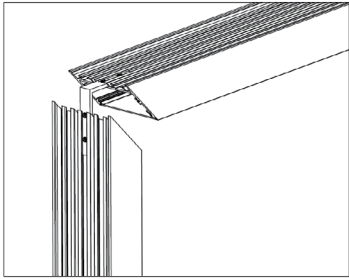


Joiners 120°
Code: **J-120**

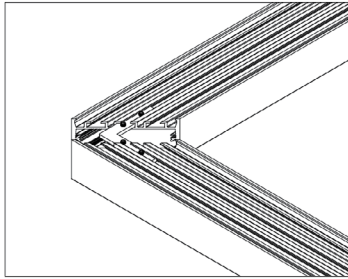
DIMENSIONS



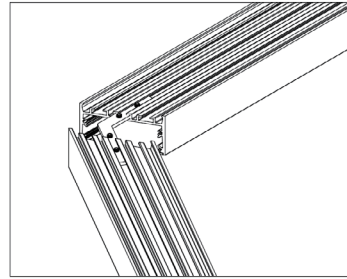
Applicable Joiners



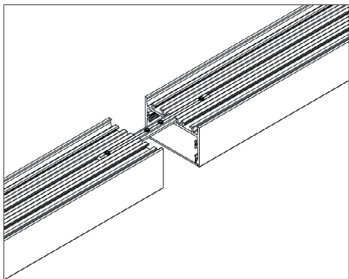
90°B



90°A



120°



180°A



LED Strip Data



SERIES	POWER W/M	VOLTAGE (V)	CRI	COLOR TEMP	L/W
VWF	14.4	24V	90	4000K	1300lm

