

LED SPORT LIGHT LUMINAIRE



Product Description

By using the most powerful and efficient heatsink, the completed LED light can work up to 50,000hours, saving up to 80% energy, have better lighting characteristics than traditional metal halide lamp of 600W to 3000W. By using the most powerful and efficient heatsink. Gymnasium, Square plaza, Shippard, Airport, Wharf, High mast and Contour lighting, etc



Electric Characteristic

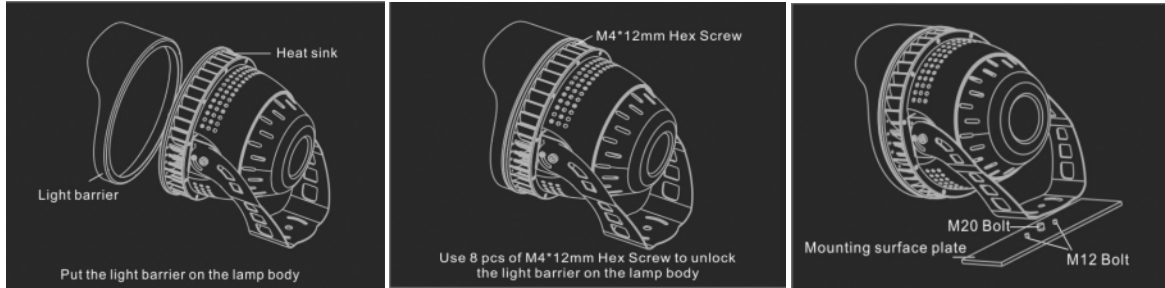
Specification/Model	VE-STU300W	VE-STU400W	VE-STU480W	VE-STU600W	VE-STU720W	VE-STU960W
LED Chips	CITIZEN 1212					
Input power	300W	400W	480W	600W	720W	960W
Lumens output	42000LM	56000LM	67200LM	84000LM	100800LM	134400LM
Efficiency	140LM/W	140LM/W	140LM/W	140LM/W	140LM/W	140LM/W
CRI	>70					
Color Temperature	4000K, 4500K, 5000K, 5700K					
Input voltage	100-277Vac					
Driver brand	Mean Well					
Beam angle	15°, 12°, 38°, 45°, 60°					
Working temperature	-30~+60°C					
Junction temperature	<75°C					
lamps efficiency	≥90%					
Certificate	UL					
Equivalent	600-900W MH/HPS	800W-1200W MH/HPS	1000-1500W MH/HPS	1200-1800W MH/HPS	1400-2200W MH/HPS	1800-3000W MH/HPS

Ordering Information

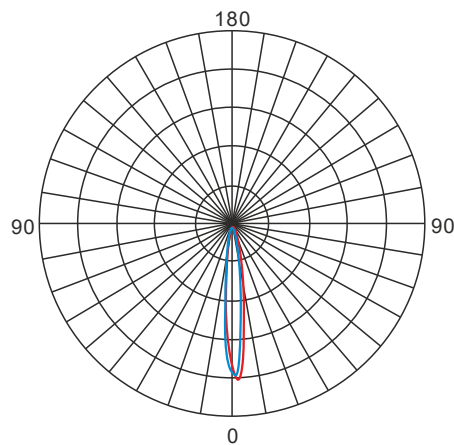
Example: VE-STU400W-40K-N-T

Product	Power	Replacement	Color Temperature	Photocell	Furnish
VE-STU30W	600	900W MH/HPS	40K 4000K 45K 4500K 50K 5000K 57K 5700K	N no photocell Y yes photocell	T-Black
VE-STU400W	400W	800-1200W MH/HPS			
VE-STU480W	480W	1000-1500W MH/HPS			
VE-STU600W	600W	1200-1800W MH/HPS			
VE-STU720W	720W	1400-2200W MH/HPS			
VE-STU796W	960W	1800-3000W MH/HPS			

Installation



Photometrics



Projected LED Lumen Maintenance

Operating hours	0	25000	50000
Lumen maintenance factor	1	0.91	0.8

Data references the extrapolated performance projections for the LED Sport Light platform in a 25°C ambient, based on 10,000 hours of LED testing (tested per IESNA LM-80-08 and projected per IESNA TM-21-11).

Dimensions (mm)

