

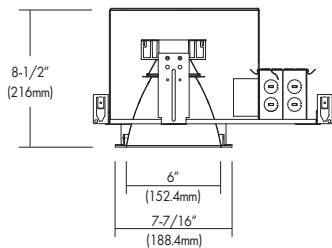


# VICED666S, VDLED666S

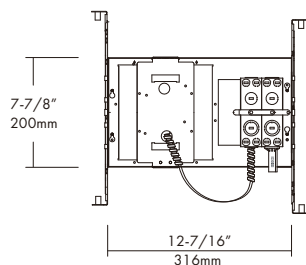
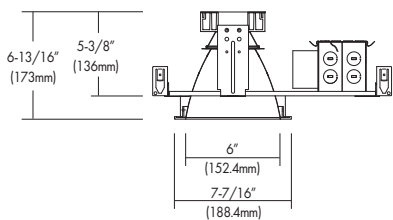
120-277 VAC, 6" X 6" IC and Non-IC Type LED Square Architectural Downlight



**VICED666S**  
[IC Rated Housing]



**VDLED666S**  
[Non-IC Rated Housing]



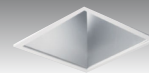
Ceiling Cut-out : 7"(178mm)SQ  
Mounting Frame : 13-13/16"(335.7mm) x 7-7/8"(200mm)

Test Specification				
LED Quantity	1EA (COB)			
Input Voltage	120-277 VAC			
Wattage (+/-5%)	<b>14W</b>	<b>23W</b>	<b>30W</b>	<b>45W</b>
Lumen (+/-5%)	950	1,790	3,220	3,220
Efficacy (LPW) (+/-5%)	67.9	77.8	71.5	71.5
Luminaire Beam	43°	43°	43°	43°
CCT (Color +/-5%)	2700K, 3000K, 3500K, 4000K			
CRI (Typical)	80, 90			
Dimming	0~10V, ELV & TRIAC Optional Lutron Drivers			
LED Module	5 yr or 50K hr			
Environment	Damp Location & *optional Wet Location			

## Design Features

- 20 gauge 6" x 6" square aperture housing adjusts ceilings up to 1-1/4" thick.
- Semi-matte diffuse lower reflectors under the upper reflector.
- 60° cutoff viewing angle of light source.
- Trims for straight downlight with flood lens.
- Light engine and driver can be replaceable through aperture below ceiling.
- Universal, 120~277V input, high efficacy drivers with dimming capability by
  - ① a Triac 120V low voltage electronic dimmer switches or
  - ② 0-10V, Triac & ELV dimmer switches.
- Optional Lutron Hi-lume A-Series, LED drivers and EcoSystem 5-Series LED drivers are available. Lutron drivers provide flicker-free, smooth, continuous dimming down to 1% for Hi-lume and 5% for EcoSystem. (Contact factory for dimming system requirements)
- Provided listed j-box and adjustable height and multiple channel brackets.

**Trims :** Various finishes available for straight (ST) down lights.



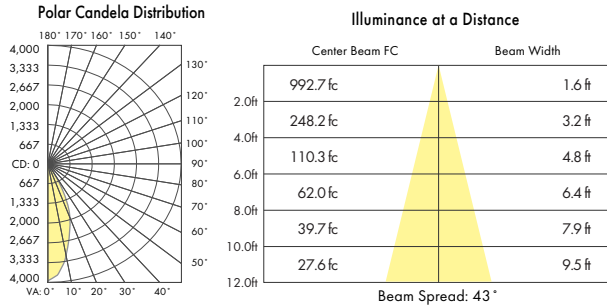
**TML614SST**  
Upper Straight down reflector

# VICED666S, VDLED666S

120-277 VAC, 6" X 6" IC and Non-IC Type LED Square Architectural Downlight

## PHOTOMETRIC REPORT\*

\* Contact Factory for IES File



[TML614SST-30-830]

## Ordering Information

### Housing

**VICED666S** = IC Housing

**VDLED666S** = Non-IC Housing

### -Watts

**-14** = 14W

**-23** = 23W

**-30** = 30W

**-45** = 45W

### -CRI

**-8** = 80

**-9** = 90

### Color Temp.\*\*

**27** = 2700K

**30** = 3000K

**35** = 3500K

**40** = 4000K

### Driver\*

**UZTD** = 0-10V, ELV & Triac dimmable

(Dimming range varies 1~10%)

**L1D** = Lutron Hi-lume 1% dimming

**L5D** = Lutron EcoSystem 5% dimming

**LTE** = Lutron Hi-lume 1% 2-Wire dimming

\*Option: Emergency

**-EM** = Emergency Battery Backup with Remote Test Switch

### Trim/LED Kit\*

**TML614SST** = Straight

\*Option: Sealed Lens

**-WRL** = Wet Location

### -Finishes\*\*

Reflector:

**-WH** = White

**-HC** = Haze Clear

**-BK** = Black

Trim:

**-WH** = White

**-BK** = Black

\*\* Consult factory for other Color Temperatures and Finishes