

VC1 LED Series



STANDARD



This cost effective strip light is ideal for use in all residential, commercial and industrial areas where general lighting is desired.

Construction:

This unit is designed from heavy gauge die formed steel and is finished in baked white enamel or polyester powder coating for maximum durability and reflectivity. Socket bar, end plate, and ballast cover snap on allowing for tool-free assembly. End plate doubles as coupler when fixture is used in continuous run. Symmetric and asymmetric reflectors are available.

Electrical

Fixtures meet requirements for UL Luminaire Standard # 1598. All units comply with National Energy Standard. All units are UL certified damp location

Mounting

Unit is equipped with knockouts and holes for pendant or surface mounting. This fixture can be mounted individually or in continuous run. 7/8" knock out is provided in end plate for conduit connector.

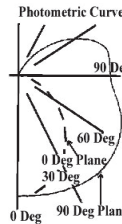
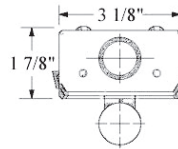
Economy Channel One Tube



WARRANTY & LISTINGS

- 5-year warranty of all electronics and housing.
- UL Certified for damp location

DIMENSIONS



| Fixture Length | | | | | | Length |
|----------------|-------|-------|---------|-------|-----|--------|
| T12 | T8 | T5 | T5 HO | BIAX | | |
| F14T12 | --- | --- | --- | --- | --- | 15" |
| F15T12 | --- | --- | --- | --- | --- | 18" |
| F20T12 | F17T8 | F14T5 | F24T5HO | F40BX | --- | 24" |
| F30T12 | F25T8 | F21T5 | F39T5HO | --- | --- | 36" |
| F40T12 | F32T8 | F28T5 | F54T5HO | --- | --- | 48" |
| --- | F40T8 | F35T5 | F80T5HO | --- | --- | 60" |
| -- | 48LED | -- | -- | -- | -- | 48" |

For Tandem Units:

Multiply lamp length above by lamp quantity

| RF | Coefficients Utilization Zonal Cavity Method | | | | | | | | | | |
|----|--|-----|-----|-----|----|----|-----|----|----|----|----|
| | 20 | | | | | | | | | | |
| | 80% | | | 70% | | | 50% | | | | |
| RC | 70 | 50 | 30 | 10 | 70 | 50 | 30 | 10 | 50 | 30 | 10 |
| 0 | 105 | 105 | 105 | 105 | 99 | 99 | 99 | 99 | 89 | 89 | 89 |
| 1 | 92 | 87 | 82 | 77 | 87 | 82 | 78 | 74 | 74 | 70 | 67 |
| 2 | 83 | 74 | 66 | 60 | 78 | 70 | 63 | 58 | 62 | 57 | 53 |
| 3 | 75 | 64 | 56 | 49 | 70 | 61 | 53 | 47 | 54 | 48 | 43 |
| 4 | 68 | 56 | 47 | 41 | 64 | 53 | 45 | 39 | 48 | 41 | 36 |
| 5 | 62 | 49 | 40 | 33 | 58 | 46 | 38 | 32 | 42 | 35 | 30 |
| 6 | 56 | 43 | 35 | 28 | 53 | 41 | 33 | 27 | 37 | 30 | 25 |
| 7 | 52 | 39 | 30 | 24 | 49 | 37 | 29 | 23 | 33 | 26 | 21 |
| 8 | 48 | 35 | 26 | 21 | 45 | 33 | 25 | 20 | 30 | 23 | 18 |
| 9 | 44 | 31 | 23 | 18 | 41 | 30 | 22 | 17 | 27 | 20 | 16 |
| 10 | 41 | 28 | 21 | 16 | 39 | 27 | 20 | 15 | 24 | 18 | 14 |

max weight= 9lbs/48"

Ordering Guide

| EC1 LED | |
|---------|---------|
| Series | Size |
| VC1 LED | 2 = 2FT |
| | 4 = 4FT |
| | 6 = 6FT |
| | 8 = 8FT |

Options

- O = Grounded outlet
- TOG = Toggle Switch
- ROC = Rocker switch
- PULL= Pull chain
- WG = Wire guard
- EMB= Emergency ballast
- REFW= White reflector
- REFS= Silver reflector
- ASY= Asymmetrical Reflector
- OCC-E = External Occupancy
- Sensor C+P = Cord + plug
- FR= Frosted Lens over LED boards

Specifications Subject To Change Without Notice