

# SOLAR STEP LED LIGHT

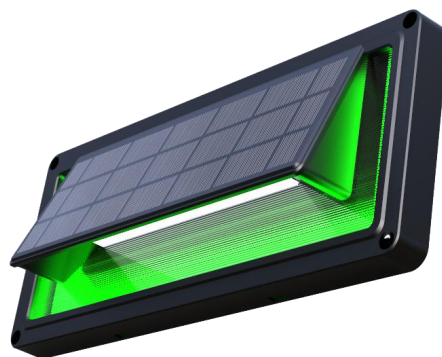
## LIGHT SENSOR + SOUND SENSOR



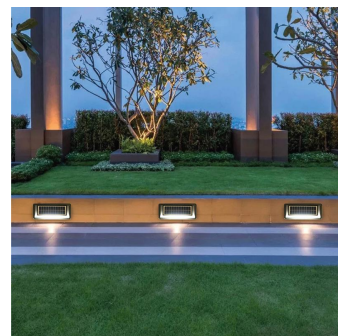
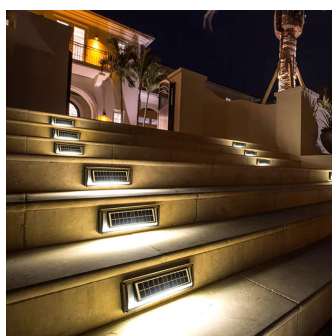
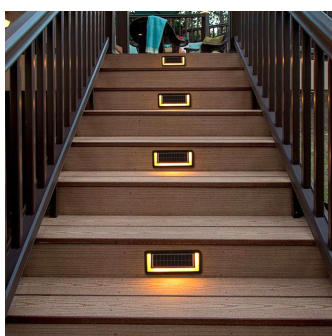
Aluminum Alloy Case ,  
Oxidation Technology  
High Lumens soft lighting



• SWL-03



• SWL-03C



### Specifications

| Model               | SWL-03   | SWL-03C                          |
|---------------------|--|----------------------------------|
| LED                 | 8100lumens (White LED)   | 800lumens (White LED+Color Leds) |
| Battery type        | Rechargeable Li-ion battery  |                                  |
| Solar panel         | 1.8W 5.5V High efficiency solar panel  |                                  |
| Solar charging time | 6-8hrs by bright sunlight  |                                  |
| Lighting Mode       | With Light sensor  | With Light sensor + Sound sensor |
| Material            | ABS+PC lens  |                                  |
| Size                | 248*104MM  |                                  |
| Working Temperature | -25°C to 65°C IP65   |                                  |
| Application         | Wall , courtyard , garden , park , roadway , public square , campus , remote area , hacienda , pasture , mongolia yurt, parking lot , door plate . |                                  |