

# Series RPR Recessed LED Patient Light



ValueEngineeredLighting  
ARCHITECTURAL LIGHTING PRODUCTS

**DESCRIPTION:** The RPR features innovative optical technology which provides powerful, focused illumination for examinations. Its exemplary design directs the light onto the bed and provides glare-free illumination for both the medical professional and patient. This ergonomical styled design helps bring a relaxed, comfortable feel to any patient room.



## ENERGY AND PERFORMANCE DATA

INPUT VOLTAGE:	120/277VAC
SYSTEM INPUT POWER:	27.8 - 93.5 WATTS*
DELIVERED LUMEN OUTPUT:	4000 - 13000 LUMENS
STANDARD DIMMING CONTROL:	0-10V
CCT:	2700, 3000, 3500, 4000, 5000 KELVIN
CRI:	82 (MINIMUM)
LIFE TIME RATING:	>100,000 HRS @ L70
INPUT FREQUENCY:	50/60 HZ
POWER FACTOR:	>0.9
OPERATING TEMP:	-30° TO 50° C

## APPROXIMATE COLOR TEMPERATURE MULTIPLIER

5000K	X	1.03
4000K	X	1
3500K	X	.97
3000K	X	.94
2700K	X	.91

PART#	DELIVERED LUMENS	WATTS	L70 @20C (HRS)
4L	4000	27.8	>100K
7L	7000	50.3	>100K
9L	9000	64.7	>100K
11L	11000	79.1	>100K
12L	12000	83.2	>100K
13L	13000	93.5	>100K

\*ACTUAL WATTAGE MAY DIFFER BY ±5% WHILE OPERATING 120/277V ±10%

**ELECTRICAL SYSTEM:** Electronic driver 0-10V 1% dimming included standard. Long-life LED system rated for >100K hours (L70 @ 25°C). Complies with federal energy efficiency standards.

**OPTICAL SYSTEM:** High efficiency extruded frosted acrylic inner diffuser. Choice of clear polycarbonate lenses.

**LISTINGS:** ETL/cETL listed. IP65 Rated. Manufactured in the USA, BAA compliant.

**CONSTRUCTION:** Housing construction per specification, available in 20 or 18 gauge cold roll steel, stainless steel, or .063" aluminum construction. Inset doorframe available in 18 gauge cold roll steel, stainless steel, or .063" aluminum. Electrostatically applied powder coat matte white finish standard, brushed finish optional. Anti-microbial white finish available with option AM. Stainless steel philips fastners are standard, with T25 Torx as an option.

**MOUNTING:** Recessed grid and recessed flanged applications. Easy installation with adjustable 90° swing arm system standard. Universal mounting allows for both recessed flanged and recessed grid mounting.

**LED:** LEDs available in 2700K, 3000K, 4000K and 5000K with CRI > 82. Projected life is >100,000 hours at 70% lumen maintenance. 90 CRI available.

**DOORFRAME GASKET:** Neoprene gasket seals door frame to housing (optional with wet location option).

**WARRANTY:** 5-Year Limited Warranty. Complete warranty and terms located at [www.velightng.com](http://www.velightng.com)

## ORDERING INFORMATION

Example: RPR-14-35-7L-B20-B18INS-125P-M-90

SERIES	SIZE	CCT	ILLUMINATION	HOUSING	DOOR
RPR	14 1'x4' 22 2'x2'	27 2700K 30 3000K 35 3500K 40 4000K 50 5000K	 4L 4000 Lumens 7L 7000 Lumens 9L 9000 Lumens 11L 11000 Lumens 12L 12000 Lumens 13L 13000 Lumens XX Custom Lumens	B18 18 Gauge Cold Rolled Steel B20 20 Gauge Cold Roll Steel (Painted) SHP18 18 Gauge Stainless Steel (Painted 304) SHP186 18 Gauge Stainless Steel (Painted 316) SHB18 18 Gauge Stainless Steel (Brushed 304) SHB186 18 Gauge Stainless Steel (Brushed 316) ALH .063" Aluminum (Painted)	B18INS 18 Gauge Cold Roll Steel SHP18INS 18 Gauge Stainless Steel (Painted 304) SHP18INS6 18 Gauge Stainless Steel (Painted 316) SHB18INS 18 Gauge Stainless Steel (Brushed 304) SHB18INS6 18 Gauge Stainless Steel (Brushed) ALHINS .063" Aluminum (Painted)
RPR-F <small>(for FLANGE mounting)</small>	24 2'x4'				
RPR-G <small>(for GRID mounting)</small>					

OUTER LENS	VOLTAGE	DRIVER	OPTIONS
125P .125" Clear Polycarbonate 156P .187" Clear Polycarbonate 187P .187" Clear Polycarbonate 250P .250" Clear Polycarbonate	M Multi-Volt (120-277VAC) HV 347-480VAC	BLANK 0-10V Dimming Driver (included standard) CD5 0-10V 5% to Off Dimming Driver EDN Electronic Driver Non-Dimming DALI 1% Dali Dimming Driver LDE1 Lutron Hi-lume 1% EcoSystem LED driver with Soft-on, Fade-to-Black dimming technology	14EBL 14 Watt Emergency Ballast 90 90 CRI AM Antimicrobial White Paint TPS Tamper Proof T25 Torx head screws with center pin VDO Lutron Vive Integral Fixture Control (RF with Daylight and Occupancy Sensing) LVCD Low Voltage Controller with Dimming

*Other options and configurations are available. Consult factory for details.*

### ENERGY AND PERFORMANCE DATA

INPUT VOLTAGE:	120/277VAC
SYSTEM INPUT POWER:	27.8 - 93.5 WATTS*
DELIVERED LUMEN OUTPUT:	4000 - 13000 LUMENS
STANDARD DIMMING CONTROL:	0-10V
CCT:	2700, 3000, 3500, 4000, 5000 KELVIN
CRI:	82 (MINIMUM)
LIFE TIME RATING:	>100,000 HRS @ L70
INPUT FREQUENCY:	50/60 HZ
POWER FACTOR:	>0.9
OPERATING TEMP:	-30° TO 50° C

#### APPROXIMATE COLOR TEMPERATURE MULTIPLIER

5000K	X	1.03
4000K	X	1
3500K	X	.97
3000K	X	.94
2700K	X	.91

PART#	DELIVERED LUMENS	WATTS	L70 @20C (HRS)
4L	4000	27.8	>100K
7L	7000	50.3	>100K
9L	9000	64.7	>100K
11L	11000	79.1	>100K
12L	12000	83.2	>100K
13L	13000	93.5	>100K

\*ACTUAL WATTAGE MAY DIFFER BY ±5% WHILE OPERATING 120/277V ±10%

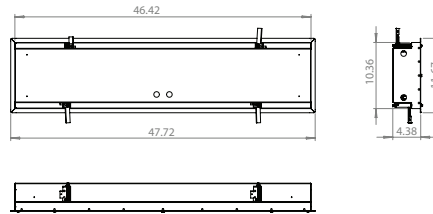


**ROUGH IN SIZE LISTED BELOW.**  
Please pay careful attention to these dimensions.

## DIMENSIONS

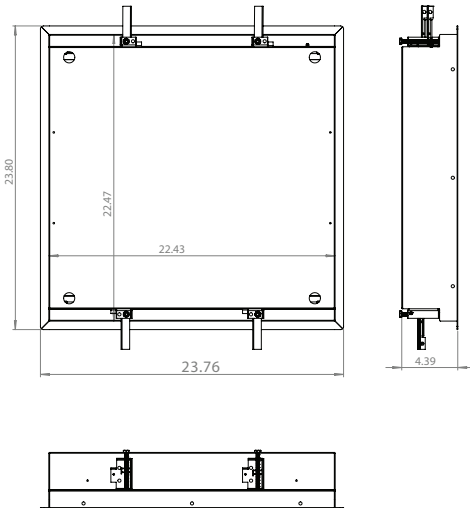
1x4

ROUGH IN SIZE TO BE 46 11/16" X 10 5/8"



2x2

ROUGH IN SIZE TO BE 22 5/8" X 22 5/8"



2x4

ROUGH IN SIZE TO BE 46 5/8" X 22 11/16"

