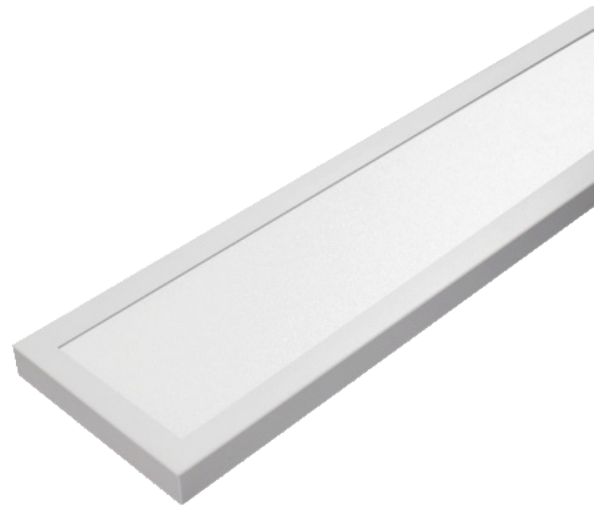




VSlim Recessed Linear

Recessed | Architectural LED Linear



The revolutionary LR series offers popular 4" and 6" widths, with lengths up to 8 feet, delivering powerful linear lighting for a variety of applications. Thanks to its wattage-selectable and CCT-adjustable technology, inventory management becomes a breeze—fulfilling more orders with fewer SKUs! Compatible with most ceiling types, the LR series is your go-to solution for offices, schools, hospitals, corridors, light industrial spaces, or anywhere stylish linear lighting is desired.

Feature

- Slim and linear design
- 2ft, 4ft and 8ft lengths, up to 1000lm/ft
- 0-10V dimming, dim to 10% or 1% options
- Available in 4", 6" width
- Wattage selectable (50%/75%/100%)
- CCT adjustable from 3000K, 3500K and 4000K



PERFORMANCE

Width	Length	Wattage Selectable	Efficacy@ 4000K	Lumen@ 4000K
4inch	2ft	20W/15W/10W	85lm/w,850lm/ft	Up to 1700lm
	4ft	40W/30W/20W	90lm/w,900lm/ft	Up to 3600lm
	8ft	80W/60W/40W	90lm/w,900lm/ft	Up to 7200lm
6inch	2ft	20W/15W/10W	100lm/w,1000lm/ft	Up to 2000lm
	4ft	40W/30W/20W	100lm/w,1000lm/ft	Up to 4000lm
	8ft	80W/60W/40W	100lm/w,1000lm/ft	Up to 8000lm

Lumen output may vary by $\pm 5\%$ based on different CCT and wattage settings. Actual wattage may also vary by $\pm 5\%$.

PRODUCT ORDERING GUIDE

Ordering Guide Example: VLR24-TWT

VLR	Length	Width	TWT
Product Series			CCT
Recessed Linear	<ul style="list-style-type: none"> ○ 2FT, 20W/15W/10W Selectable Up to 1700lm for 4inch width, 2000lm for 6inch width ○ 4FT, 40W/30W/20W Selectable Up to 3600lm for 4inch width, 4000lm for 6inch width ○ 8FT, 80W/60W/40W Selectable Up to 7200lm for 4inch width, 8000lm for 6inch width 	<ul style="list-style-type: none"> ○ 4 inch ○ 6 inch 	<ul style="list-style-type: none"> ○ CCT adjustable 3000K/3500K/4000K
<p>*Additional cost and/or lead time on customized fixtures may apply. Some fixtures require an MOQ. Please contact your sales rep for more information.</p>			

OPTIONAL ORDERING GUIDE

Optional 0-10V Dimming	Optional Function
<ul style="list-style-type: none"> ○ 110-277V AC, Dims to 10% (Standard) <small>Tested Dimmers: Lutron® Diva-Dvtv, Leviton® IP-710-DL</small> ○ 110-277V AC, Dim to 1% 	<ul style="list-style-type: none"> ○ Emergency Function (Only external 8w or 25w LED emergency driver with standard indicator available and need field-installed.) ○ Sensor Function* We can provide a factory-installed integrated sensor system for multi-level control based on motion and/or daylight contribution with BR1810BI-level & daylight harvest microwave sensor from SHARKWARD. For more info or spec sheet, please contact sales.





VSlim Recessed Linear Recessed | Architectural LED Linear

PRODUCT PERFORMANCE

DIMENSION

Construction

Extruded aluminum housing

Electrical

LED Driver	External
Dimming	Powered by high efficiency LED driver, with a standard 0-10V dimming which continuous dims to 10% that works with many types of controls. Tested Dimmers: Lutron ® Diva-Dvtv, Leviton ® IP-710-DL.
THD	<20%
Power Factor	>0.9
Input Voltage	Standard electronic driver is UL recognized and available for 110-277V AC.

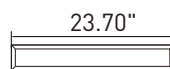
LED System

CRI	Minimum 80 color rendering index
CCT	CCT adjustable from 3000K, 3500K and 4000K with a great color consistency.
LED	life Minimum 50,000h with 87.8% of lumen maintenance in 25°C ambient temperature, in compliance with IES LM-80 testing measurements.
Thermal Management	Aluminum housing acting as the heat sink to maximize life.

Approvals

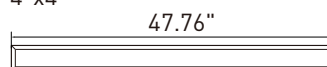
- cULus listed for damp locations
- 5-year Limited Warranty

4"x2'

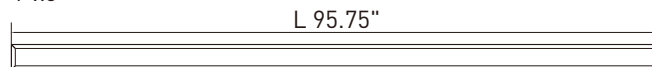


W 3.74"
H 2.17"

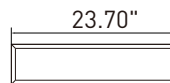
4"x4'



4"x8'

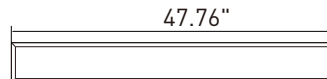


6"x2'

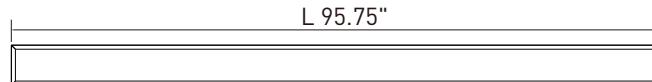


H 2.17"
W 5.75"

6"x4'

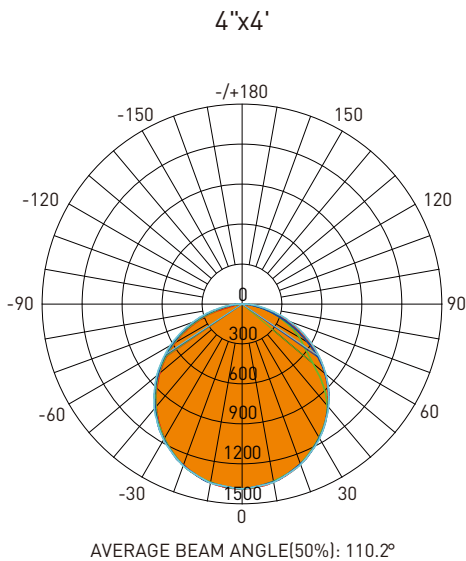


6"x8'





DISTRIBUTION DIAGRAM



Test Number: VLR44-35E
 Lumens: 3773.4 Lm Watts:
 40 W
 LPW: 94.34 Lm/W
 CCT: 3500K

UNIT: cd
 — C0/180,111.1°
 — C30/210,105.7°
 — C60/240,111.3°
 — C90/270,112.8°

Zonal Flux Diagram

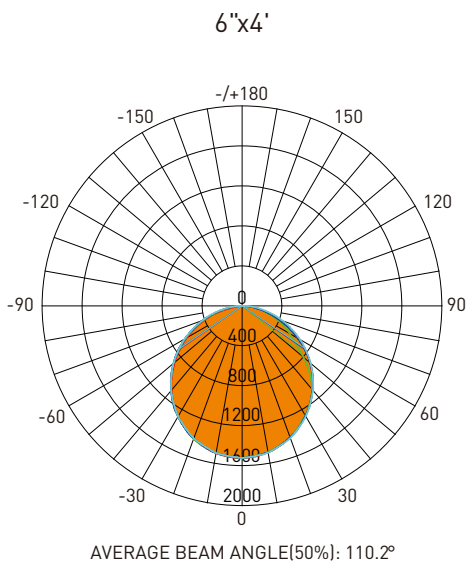
Y	C0	C45	C90	C135	C180
5	1378	1372	1373	1374	1381
10	1357	1352	1359	1356	1362
15	1324	1322	1322	1328	1331
20	1279	1274	1284	1279	1287
25	1224	1223	1225	1226	1232
30	1159	1158	1166	1158	1165
35	1085	1084	1088	1074	1089
40	1002	1004	1010	958.2	1003
45	912.5	885.3	916.5	780.5	909.0
50	815.0	735.3	822.7	609.3	807.8
55	711.5	600.0	716.0	490.2	698.2
60	599.9	498.1	609.2	394.6	581.3
65	481.9	403.6	494.7	307.4	457.1
70	361.4	305.2	380.1	221.3	331.1
75	234.4	211.9	270.0	140.1	168.8
80	131.0	122.2	159.9	75.20	59.38
85	28.69	51.55	81.29	29.13	10.88
90	1.227	4.243	2.669	2.701	1.005

Zonal Lumens

Y	φ total
0-5	32.98
5-10	130.7
10-15	289.8
15-20	504.6
20-25	767.9
25-30	1070
30-35	1402
35-40	1751
40-45	2104
45-50	2443
50-55	2757
55-60	3038
60-65	3279
65-70	3472
70-75	3616
75-80	3710
80-85	3759
85-90	3773

Luminance cd/(m2)

G(DEG)	C0/180	C90/270
85	4286	12145
80	9823	11991
75	11791	13583
70	13759	14470
65	14849	15240
60	15624	15865
55	16153	16254
50	16510	16666
45	16803	16877



Test Number: VLR46-35E
 Lumens: 4180.4 Lm Watts:
 40 W
 LPW: 104.51 Lm/W
 CCT: 3500K

UNIT: cd
 — C0/180,110.8°
 — C30/210,107.0°
 — C60/240,111.2°
 — C90/270,111.8°

Zonal Flux Diagram

Y	C0	C45	C90	C135	C180
5	1513	1507	1508	1510	1518
10	1489	1485	1494	1491	1498
15	1452	1452	1452	1461	1464
20	1402	1399	1411	1408	1415
25	1340	1341	1345	1349	1354
30	1268	1269	1278	1271	1280
35	1185	1186	1192	1177	1195
40	1094	1098	1105	1067	1100
45	995.5	978.4	1002	914.6	995.9
50	889.3	838.9	898.4	746.0	884.3
55	777.1	689.3	783.0	605.3	764.9
60	659.0	562.4	667.6	484.8	639.7
65	536.6	454.9	546.6	376.9	511.3
70	413.3	349.1	425.5	276.8	382.3
75	287.0	244.2	309.4	186.1	238.8
80	164.7	144.4	193.3	107.6	79.40
85	40.56	63.05	98.59	46.12	17.81
90	3.175	4.753	3.887	2.886	0.5494

Zonal Lumens

Y	φ total
0-5	36.22
5-10	143.5
10-15	318.2
15-20	553.9
20-25	842.6
25-30	1174
30-35	1537
35-40	1917
40-45	2303
45-50	2677
50-55	3025
55-60	3337
60-65	3605
65-70	3824
70-75	3990
75-80	4102
80-85	4162
85-90	4180

Luminance cd/(m2)

G(DEG)	C0/180	C90/270
85	3368	8185
80	6864	8054
75	8024	8650
70	8745	9002
65	9187	9358
60	9536	9662
55	9803	9878
50	10011	10113
45	10188	10249

