

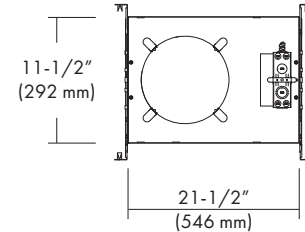
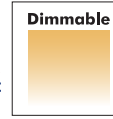
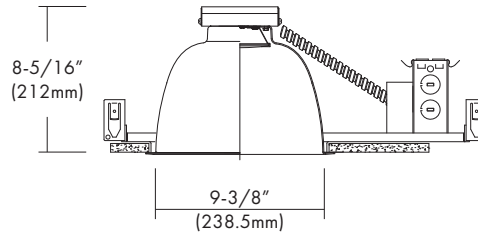
# LEDVH-CFK9-G2

120V-277VAC LED 9", Non-IC, Commercial Flat Frame-in Kit  
Down Light with interchangeable Reflector Trims



ValueEngineeredLighting  
ARCHITECTURAL LIGHTING PRODUCTS

## 9" LED Commercial Flat Frame-in Kit



Ceiling Cut-out : 9"-3/4"

### DESCRIPTION

The LEDVH-CFK9-G2 is a 9" LED, Non-IC Commercial Flat Frame-in Kit and is available with multiple Trim styles. Designed for use in non-insulated ceilings, Insulation material must be kept a minimum of 3" from fixture. Available with a 10W, 14W, 22W, 32W or 44W high efficacy LED engine and universal, dimmable drivers. The special optical diffuser produces high lumen transmission and even illumination. Suitable for Wet Locations.

### DESIGN FEATURES

#### Mounting Frame

- Galvanized steel construction.
- Housing adjusts for ceilings up to 1-1/4" thick.

#### LED Module & Trim

- Painted, extruded aluminum heat sink designed to facilitate efficient heat dissipation for superior thermal management and reliability.
- LED engine includes LED, heat sink and lens assembly.
- Heavy gauge aluminum reflector anodized in clear haze or white paint finishes. Multiple trim styles and finishes are available.

#### LED Driver

- Universal, 120~277 VAC input, high efficiency dimming drivers with ① Triac/ELV dimmer switches or Triac/ELV/0-10V dimmer switches.
- Drivers feature power factor >.90, THD <20% with integral thermal protection to sense over temperature or electrical issues.
- Driver mounts externally to the module to allow future replacement or upgrading if desired.
- Optional Lutron Hi-lume A-Series, LED drivers and EcoSystem 5-Series LED drivers are available. Lutron drivers provide flicker-free, smooth, continuous dimming down to 1% for Hi-lume and 5% for EcoSystem. (Contact factory for dimming system requirements)

#### Junction Box

- Listed for through branch circuit wiring. (Max.8 No 12 AWG 90°C branch circuit conductors: 4 in, 4 out)
- (5) 1/2" knockouts with pry-out slots and (4) knockouts with Romex cable clamps.
- Ground wire provided on J-box.

#### Bar Hangers

- 24" Bar Hangers provide stability and support on joists and T-Bar Grid ceilings.
- Housing can be positioned at any point within 24" joist spacing.
- Score lines allow easy "bend & snap-off" shortening for 12" joist spacing.

#### Options

- Emergency battery back-up : Available in mounted to fixture or remote, adjacent to luminaire (consult with factory for space requirements).

#### Limited Warranty

- LED Module: 5 years/50K hours
- Product/Driver: 3 years

#### Listing

- cETLus Wet Location
- California Title 24

### SPECIFICATION

Input Voltage	120-277VAC				
Wattage (+/-5%)	10W	14W	22W	32W	44W
Lumen (+/-5%)	1,000 lm	1,400 lm	2,200 lm	3,200 lm	4,400 lm
Efficacy (LPW)	100 lm/W	100 lm/W	100 lm/W	100 lm/W	100 lm/W
Beam Angle	67.7°	75°	75.5°	77°	77°
CRI (Typical)	80, 90				
CCT (Color +/-5%)	2700K, 3000K, 3500K, 4000K				
Available Dimming	Triac/ ELV/ 0~10V/ DALI/ Lutron				
LED Module	5 yr/50K hr				
Environment	Damp & Wet Location				

#### Triac/ELV/0-10V Approved Dimmers

##### \* Lutron:

Triac: Skylark S-600  
ELV: NovaT NTELV-300 & 600  
Diva DVELV-300P & 303P  
Maestro MAELV-600  
Skylark SEL-VB-300P

##### 0-10V:

Diva DDTV  
Diva DVSTV-IV  
CFL/LED: Diva DVCL-253P  
Ariadni AYCL-253P

##### \* Leviton:

Triac: Trimatron #705W  
ELV: IPE04-1L (ELV)  
Acenti: ATE06-1LW

\* Consult tech. service or factory for additional dimmers

\* Provided: Easy-quick connector case (patent pending)



## TRIM



**LEDT-R94**  
Specular Open Reflector

**LEDT-R914**  
Baffle w / Reflector

**LEDT-R941**  
Baffle w /  
Regressed Lens



**LEDT-R940**  
Reflector w /  
Frosted Floating Lens

**LEDT-R922**  
Reflector w /  
Regressed Lens

\* All trims are rated for damp location and regressed lens trims are wet location listed.

\* Wide beam reflector is standard. Also available narrow beam in reflector (consult with factory).

\* LEDT-R941 is suitable and rated for shower location.

## Ordering Information

### Model

**LEDVH-CFK9-G2** = 9", Non-IC, Commercial  
Flat Frame-in Down Light Kit

### -Watts

-10 = 10W (UZTD & UTMD Driver Only)  
-14 = 14W  
-22 = 22W  
-32 = 32W  
-44 = 44W

### -CRI

-8 = 80  
-9 = 90

### Color Temp. \*\*

27 = 2700K  
30 = 3000K  
35 = 3500K  
40 = 4000K

### Driver\*

**UTD** = 120~277VAC, Triac/ELV Dimming  
(14, 22 & 32W Only)  
**UZTD** = 120~277VAC, 0~10V Dimming  
(10, 14, 22, & 32W Only)  
**UTMD** = 120~277VAC, Tri-Mode(0~10V/Triac/ELV)  
Dimming (10, 14, 22, 32 & 44W)  
**LDE1** = **LUTRON**. Hi-lume 1% EcoSystem FadeToBlack  
**LTE** = **LUTRON**. Hi-lume 1% 2-Wire Dimming  
**PEQ01** = **LUTRON**. Hi-lume Premier 0.1% EcoSystem  
FadeToBlack (For 23W or less only)  
**UDALI** = **Universal** DALI Dimming to 1%

\*Option : Emergency

-EM = Emergency Battery Backup with Remote  
Test Switch  
-IEM = Integral Emergency Battery Backup

### Trim

**LEDT-R94**  
**LEDT-R914**  
**LEDT-R941**  
**LEDT-R940**  
**LEDT-R922**

### -Reflector Finish\*\*

-HC = Haze Clear  
-WH = White Painted

### Baffle Finish for LEDT-R914 & R941

-WH = White  
-BK = Black

### Optional Metal Trim Ring Finish

-WH = White Plastic Trim Ring (Standard)  
-WMR = White Metal Ring  
-SN = Satin Nickel  
-CH = Chrome  
-SF = Polished Self-Flange (for Open or  
Wall Wash Reflectors ONLY)

\*\* Consult factory for other Color Temperatures and Finishes