



STELLAR CURVED LED TROFFER [NA]

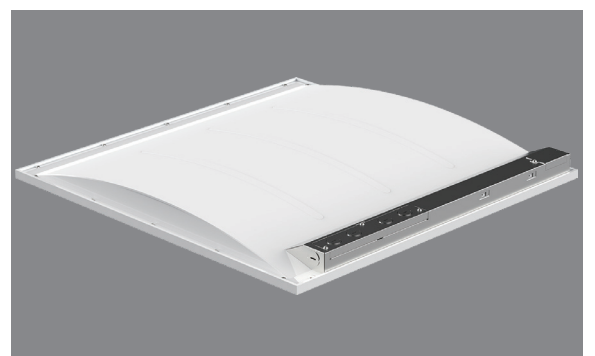
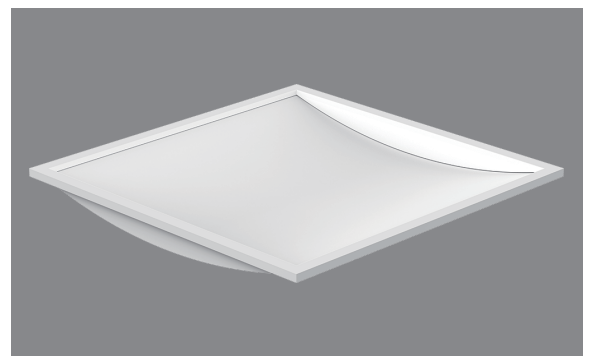


Available Sizes

2x2FT	603x603x50mm
2x4FT	603x1213x50mm

Features & Benefits

- Simple and elegant, beautiful appearance
- Adopting the principle of side emitting light, bend the light guide plate for arc design
- Curved luminous surface, comfortable and soft



STELLAR C LED TROFFER [NA]

General Information

MODEL	Size (mm)	Wattage (W)	Efficacy (lm/W)	Colour Temp(K)	CRI
2x2 FT	603x603x50	25-30-40	110/125	3500-4000-5000	Ra>80
2x4 FT	603x1213x50	30-40-50	110/125	3500-4000-5000	Ra>80

Performance Data

Efficacy(lm/w)	110;125
IP Rating	20
Warranty	5 Years (50000Hrs)
Dimming	0/1-10V Dim
Leds Type	4014
Environment	Indoor
Working Temperature	-25°C-40°C
Relative Humidity	10%-90%RH
Color Finish	RAL9016
SDCM	<5
LIFESPAN (Hrs) L80B20 @25°C	≥50000Hrs
CRI	>80
CCT	3500K-4000K-5000K
Beam Angle	110°; 90°
UGR	<22; <19

Construction

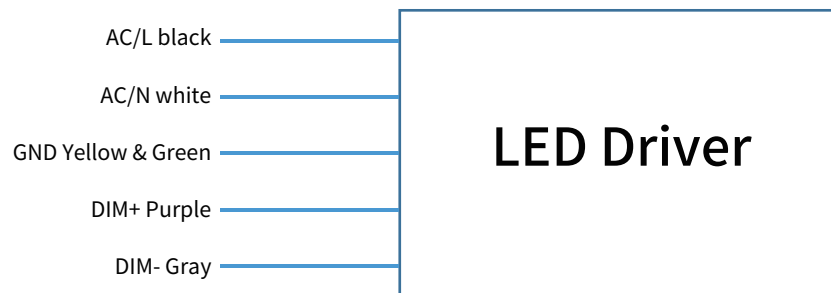
Frame Material	Aluminum
Diffuser	PS
Back-plate Material	SPCC

STELLAR C LED TROFFER [NA]

Electrical

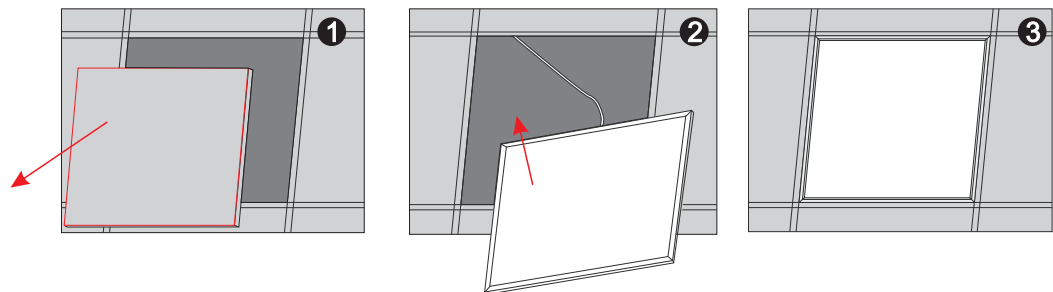
Input Voltage	AC:120-277/347V 50/60Hz
Output Voltage	DC: 28-40V
Power Factor	>0.9
THD	≤20%
Insulation Class	Class II
Overload Protection	103~120%
Overload Protection Type	Auto Resume

Wiring Diagram



Recessed Installation

Customers can choose safety rope to avoid lamp falling caused by uncertain factors (earthquake , etc).



1. Remove the plasterboard from the ceiling

2. Fix the panel into ceiling.

3. Installation finished.